



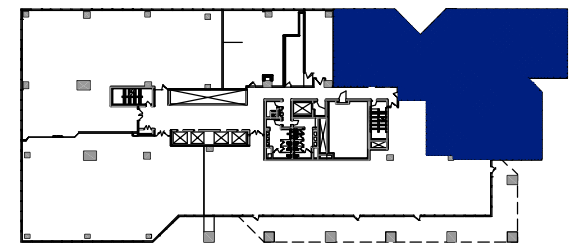
GATEWAY ONE

St. Louis' Premier Address

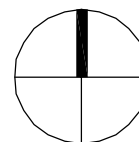
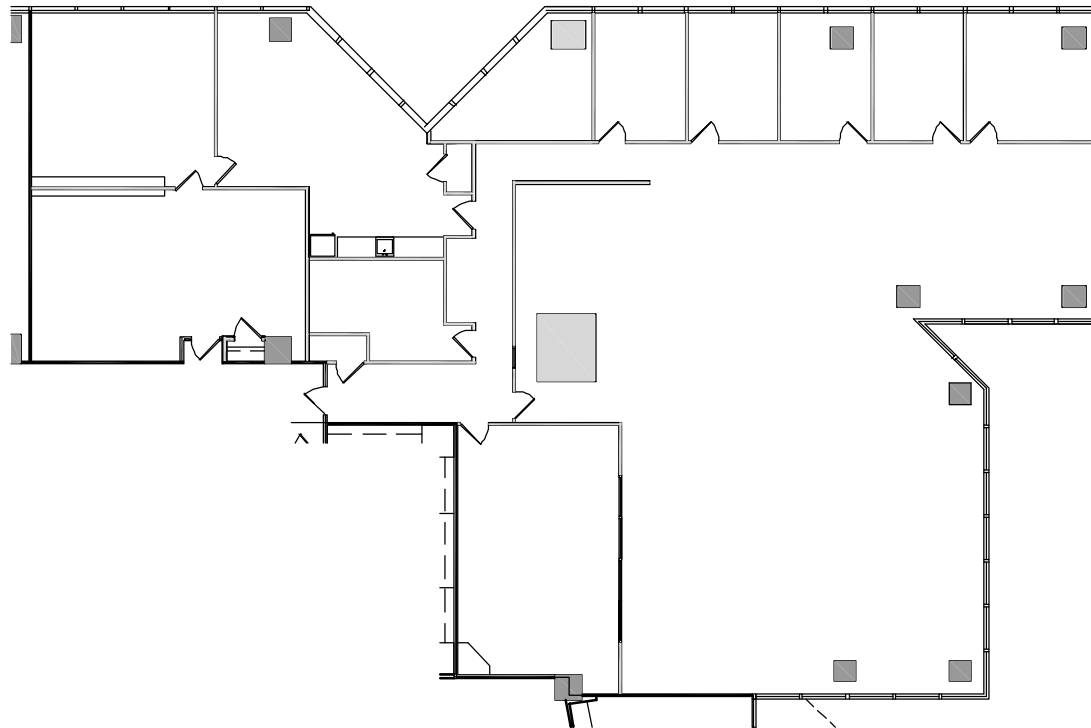
Suite 400

Approximate Square Footage: 7,132 r.s.f.

- Up to 7 exec. offices with Arch views
- Open plan recently remodeled
- Able to subdivide



Key Plan



www.gateway-one.com

Leased exclusively by
EVS Realty Advisors, Inc.
For information contact:
Tony Kennedy
314.241.1175
tony.kennedy@evsra.com



[realty advisors, inc.](http://www.realtyadvisors.com)